

OPERATING HOUR INDICATION SYSTEM

When the ignition switch is initially turned “ON” (from “OFF”), the ECM tests the caution system by turning on all four lamps in the monitor-tachometer and sounding the caution buzzer for an initial two seconds.

For the next three seconds, the ECM indicates the total operating hours, using a combination of the tachometer needle and “REV-LIMIT” lamp flash.

NOTE:

The total operating hours displayed are those of actual engine operation, not ignition switch “ON” time.

MONITOR-TACHOMETER

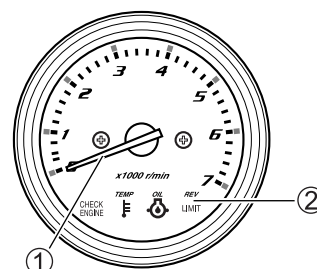


CHART OF TOTAL OPERATING HOURS INDICATION

Total operating hours	MONITOR-TACHOMETER	
	Needle ① indication	REV-LIMIT lamp ② flashing *
0 h – (49 h)	No	No
50 h	500 r/min	
60 h	600 r/min	
⋮	⋮	
540 h	5400 r/min	1 time
550 h	500 r/min	
560 h	600 r/min	
⋮	⋮	
1040 h	5400 r/min	2 times
1050 h	500 r/min	
⋮	⋮	
1540 h	5400 r/min	3 times
1550 h	500 r/min	
⋮	⋮	
2030 h	5300 r/min	
2040 h or over	5400 r/min	3 time

* : One flashing is corresponded to 500 hours.